

Glass-Inserted Cover Frames, Blind Covers for DIN Cutouts

AR 48
AR 72
AR 96
AR 144
AR 72x36
AR 96x24
AR 96x48
AR 144x72
BA 48
BA 72
BA 96
BA 96x24



Application

The glass-inserted cover frames **AR 48/72/96/144/72x36/96x24/96x48/144x72** and the blind covers **BA 48/72/96/96x24** for catch fixing provide cover for DIN cutouts in switchgear panels.

Mechanical Data

Cover Frames, Glass-Inserted

construction	case suitable for mounting in switchboards or mosaic grid panels, stackable
material of case	polycarbonate, white (similar to RAL 9010)
window	glass ▶
colour of bezel	black (similar to RAL 9011)
panel fixing	clamp fixing
panel thickness	1 ... 15 mm
mounting	stackable next to each other
dimensions	refer to "Dimensions"
mounting depth	refer to "Dimensions"

Blind Covers for DIN Cutouts

material	self-extinguishing thermoplastics PPE + PS
colour	black 701
panel fixing	catch fixing
panel thickness	1 ... 4 mm
mounting	stackable next to each other

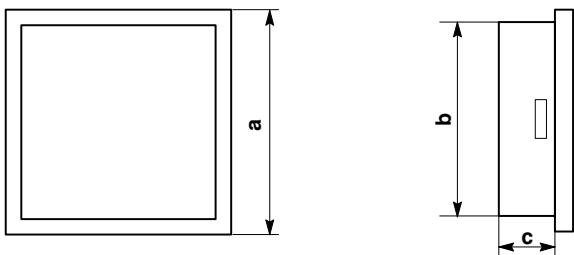
Options (on Request)

Cover Frames, Glass-Inserted

window	non-glaring glass or frosted glass
--------	------------------------------------

Dimensions

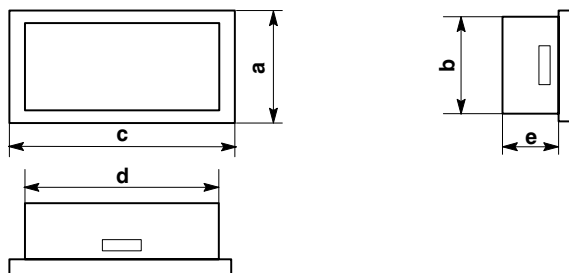
AR 48/72/96/144



dimensions (in mm)	AR 48	AR 72	AR 96	AR 144
a	□ 48	□ 72	□ 96	□ 144
b	□ 45	□ 67.5	□ 91.5	□ 137.5
c	18	18	18	18

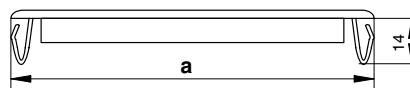
▶ Options on request

AR 72x36/96x24/96x48/144x72



dimensions (in mm)	AR 72x36	AR 96x24	AR 96x48	AR 144x72
a	36	24	48	72
b	32.5	22	45	67.5
c	72	96	96	144
d	67.5	91.5	91.5	137.5
e	18.5	18.5	18.5	18.5

BA 48/72/96/96x24



dimensions (in mm)	BA 48	BA 72	BA 96	BA 96x24
a	□ 48	□ 72	□ 96	96x24

Ordering Information

Type	Cover frame, glass-inserted
AR 48	48 mm x 48 mm
AR 72	72 mm x 72 mm
AR 96	96 mm x 96 mm
AR 144	144 mm x 144 mm
AR 72 x 36	72 mm x 36 mm
AR 96 x 24	96 mm x 24 mm
AR 96 x 48	96 mm x 48 mm
AR 144 x 72	144 mm x 72 mm
Window	glass ¹⁾ non-glaring glass ²⁾ frosted glass

¹⁾ Standard

²⁾ only for AR 72/96/144

Type	Blind cover for DIN cutouts
BA 48	48 mm x 48 mm
BA 72	72 mm x 72 mm
BA 96	96 mm x 96 mm
BA 96 x 24	96 mm x 24 mm

ordering example

AR 144, glass-inserted cover frame, 144 mm x 144 mm, frosted glass

Weigel Meßgeräte GmbH

Postfach 720 154 • 90241 Nürnberg • Phone: 0911/42347-0
 Erlenstraße 14 • 90441 Nürnberg • Fax: 0911/42347-39
 Sales: Phone: 0911/42347-94
 Internet: <http://www.weigel-messgeraete.de>
 e-mail: vertrieb@weigel-messgeraete.de

– specifications subject to change without notice; date of issue 07/14 –

